



SPECIALTY
ARCHITECTURAL
PRODUCTS

Statement Making Products

Igor Beaufils
1977 Pinelawn Drive
Toledo, Ohio 43614-3534

(419) 382-0706
Fax (419) 380-9425
E-mail: igor@igorglass.com

Design Guide – Countertop Glass

Criteria	Back-painted Glass	Cast Glass	Textured Film Based Glass and Plastic	Fused – Thick Glass	Laminated Glass	Slump Cast Glass
Cost	\$18 – 50 sf	\$300 - \$700	\$40 - \$150	\$150 – 300 sf	\$150 - 300 sf	\$85 & up
Availability	Many patterns – mostly 4mm, 1/8"	Many patterns available, Custom for mold cost	Many patterns, custom molds fairly easily made	Very Wide	Artistic – very wide	Wide
Thickness	¼ - ¾"	1" – 4"	1/8" to 1-7/8"	¾" to 3"	Practical up to 1-1/2"	¼" – ¾"
Lead Time	2 to 8 weeks	6 to 14 weeks	3 to 6 weeks	8 to 10 weeks	4 to 12 weeks	8 to 10 weeks
Heat source Proximity	Avoid heat sources	Not an issue	Not in close proximity	Not an issue	Not be near heat source	Not an issue
Design Flexibility	Poor	Very Good Molds cost	Excellent – plastics as well	Excellent	Excellent	Excellent
Endurance/ Durability	Very Good	Very Good	Very Good	Very Good	Very Good	Very Good
Lamination or Tempering	Yes	Yes	Yes	Yes	Yes	Yes
Cleaning	Easily cleaned	Easily Cleaned	Easily Cleaned	Easily Cleaned	Easily Cleaned	Easily Cleaned
Warranty	1 -5 years on paint	Nothing to warranty	1 – 5 years	Nothing to warranty	1-10 on lami	Nothing to warranty

Warranty – for most textured glasses there is nothing to warranty. The texture will not alter or fade overtime. If the product is laminated that is a different story. Lamination warranties vary from 1-10 years depending on the application and type

Updated – March 28, 2018

Intended Only for Practicing Architects, Interior Designers, Specification Professionals, and Graphic Designers.

Any specifications or market information are intended to serve as a "guide" only and it is the responsibility of the recipient to review for accuracy and applicability for the intended use.

All Rights Reserved 2016 Specialty Architectural Products – reproduction by, to, and for Practicing Architects, Interior Designers, Specification Professionals, and Graphic Designers is permitted. No alterations are permitted.



Statement Making Products

Igor Beaufiles
1977 Pinelawn Drive
Toledo, Ohio 43614-3534

(419) 382-0706
Fax (419) 380-9425
E-mail: igor@igorglass.com

of lamination material used. Glass manufacturers rarely if ever warranty a product against breakage.

Working Definitions:

1. Prices based on 1/4" tempered glass or thinnest available.
2. Design Flexibility = ability to transfer your desires into glass.
3. Endurance = appearance after 3 years. All glass is susceptible to scratching unless an anti-scratch coating is added. These coatings usually last for around three years. Some textures will hide scratches better than others.
4. Rolled Pattern Glass – mass-produced decorative glass. The process to form this glass is part of the clear float process – large rollers are used to form the pattern.
5. Sandblasted Carved Glass – process of subtracting glass away to form images or textures. It is a similar process to etch glass but more glass is removed and the process is far more tedious and artistic.
6. Slump Cast Glass – process of using ordinary clear float or low iron glass and placing the glass on molds inside of an oven. Through heat, the mold material, and gravity textures can be formed in the glass. Sometimes this is called Kiln Glass, Thermoformed Glass, or Cast Glass. The term cast glass in this definition is not the same as molten cast glass.
7. Thick glass is fused product usually made in a kiln (slump cast glass) oven and process. Typically this product is 3/4" or thicker.
8. Poor, Fair, Excellent ratings are relative to the products listed and standard tempered glass.

Updated – March 28, 2018

Intended Only for Practicing Architects, Interior Designers, Specification Professionals, and Graphic Designers.

Any specifications or market information are intended to serve as a "guide" only and it is the responsibility of the recipient to review for accuracy and applicability for the intended use.

All Rights Reserved 2016 Specialty Architectural Products – reproduction by, to, and for Practicing Architects, Interior Designers, Specification Professionals, and Graphic Designers is permitted. No alterations are permitted.



Statement Making Products

Igor Beaufiles
1977 Pinelawn Drive
Toledo, Ohio 43614-3534

(419) 382-0706
Fax (419) 380-9425
E-mail: igor@igorglass.com

Market Trends

1. Thick glass prices are falling.
2. Film based textured products have arrived. These products are weather resistant and durable. Can be used on glass and plastic substrates and the surfaces are flat. Go to <http://www.igorglass.com/products/dichrolam-textures> for more information
3. Color fusing is becoming more prevalent.
4. Edge Lighting Countertop (Thick glass) is very popular.

Installation

We recommend that the marble institute installation guide be used. Holes can be added to the glass, but it is important to understand that holes inherently weaken the glass. Additionally, if too much torque is used the glass may crack. Another area of concern is cantilevers. Special care and attention should be directed not to allow for more than 1/3 of the dimension in question should be cantilevered. Please see Marble Institute's guidelines for further direction. Finally, special care should be given regarding certain glass countertop products in close proximity (touching a heat source). Glass counters at this point in time should not be used for cutting and hot items should never be placed directly on them.

Updated – March 28, 2018

Intended Only for Practicing Architects, Interior Designers, Specification Professionals, and Graphic Designers.

Any specifications or market information are intended to serve as a "guide" only and it is the responsibility of the recipient to review for accuracy and applicability for the intended use.

All Rights Reserved 2016 Specialty Architectural Products – reproduction by, to, and for Practicing Architects, Interior Designers, Specification Professionals, and Graphic Designers is permitted. No alterations are permitted.



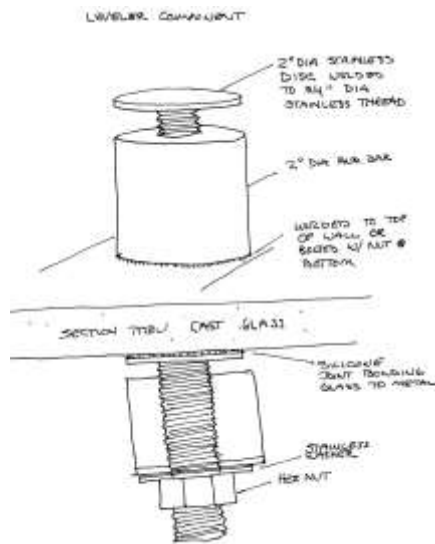
SPECIALTY
ARCHITECTURAL
PRODUCTS

Statement Making Products

Igor Beaufils
1977 Pinelawn Drive
Toledo, Ohio 43614-3534

(419) 382-0706
Fax (419) 380-9425
E-mail: igor@igorglass.com

For thick glass products – over 3/4” – we do recommend a leveling type system, see the image below.



Updated – March 28, 2018

Intended Only for Practicing Architects, Interior Designers, Specification Professionals, and Graphic Designers.

Any specifications or market information are intended to serve as a "guide" only and it is the responsibility of the recipient to review for accuracy and applicability for the intended use.

All Rights Reserved 2016 Specialty Architectural Products – reproduction by, to, and for Practicing Architects, Interior Designers, Specification Professionals, and Graphic Designers is permitted. No alterations are permitted.